



CL7400



Amplified Wireless Digital TV Headset
User Guide

CONTENTS

| | |
|---|----|
| CONTENTS | 1 |
| INTRODUCTION | 2 |
| Unpacking the CL7400 | 3 |
| INSTALLATION | 4 |
| Setting Up – Connecting Charging Base to TV | 4 |
| SCART Users | 6 |
| RCA Users | 6 |
| Neither SCART nor RCA Users | 6 |
| USING THE CL7400 | 10 |
| Turning the CL7400 On | 10 |
| SETTINGS | 11 |
| Volume Setting | 11 |
| Balance Setting | 12 |
| Tone Setting | 13 |
| Stereo/Mono Setting | 14 |
| PAIRING | 15 |
| ECO MODE | 17 |
| WIRED MODE | 18 |
| CL7400 with Hi Fi or MP3 | 18 |
| TROUBLESHOOTING | 19 |
| SAFETY INFORMATION | 21 |
| GENERAL INFORMATION | 23 |
| GUARANTEE | 24 |
| RECYCLING DIRECTIVES | 25 |

INTRODUCTION

Congratulations on purchasing your Geemarc CL7400. The CL7400 is a pair of stylish top quality headphones together with a charging base that can be plugged into the TV, Laptop, Audio, MP3 and iPods. The headphones provide high quality CD sound and the volume can be increased up to 125dB. The CL7400 is useful for the hard of hearing person, allowing them to listen to the TV or such like at a desired volume without the need to turn up the volume on the TV. Or, if one person likes to read in bed and the other likes to watch TV, simply wear this comfortable, lightweight and adjustable headset.

The headset also has built-in tone control, volume control, balance control and stereo or mono selection. It has a built in rechargeable battery which self charges when placed back on the charging base. The Geemarc CL7400 has an indoor range of up to 50 meters from the transmitter and works digitally through walls.

This easy to use stylish device will allow you to hear the beauty of the sound with amazing sound quality transmission.

The CL7400 is also foldable for easy transportation.



Its is important that you read the instructions below in order to use your Geemarc CL7400 to its full potential. Keep this user guide in a safe place for future reference.

INTRODUCTION

Unpacking the CL7400

When unpacking the CL7200, you should find the following in the box:

- CL7400 Radio Controlled Headphones
- Charging Base
- AC Power Adaptor
- 3.5mm Male jack to 2 RCA plugs adaptor cable
- 3.5 mm Female jack to 2 RCA plugs adaptor cable
- 1 User Guide

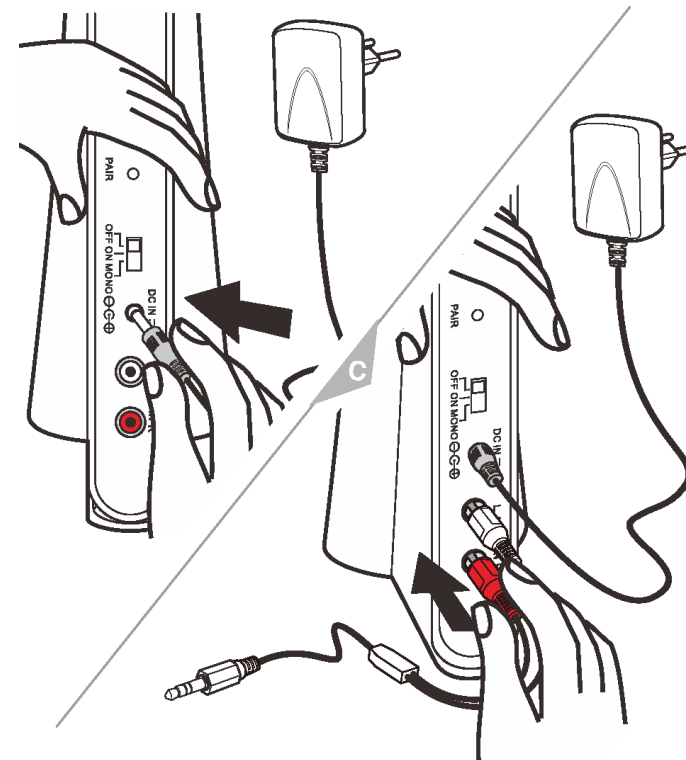


For product support and help visit our website at www.geemarc.com
Telephone 01707 384438
Or fax 01707 372529

INSTALLATION

Setting Up – Connecting Base to TV (or other device)

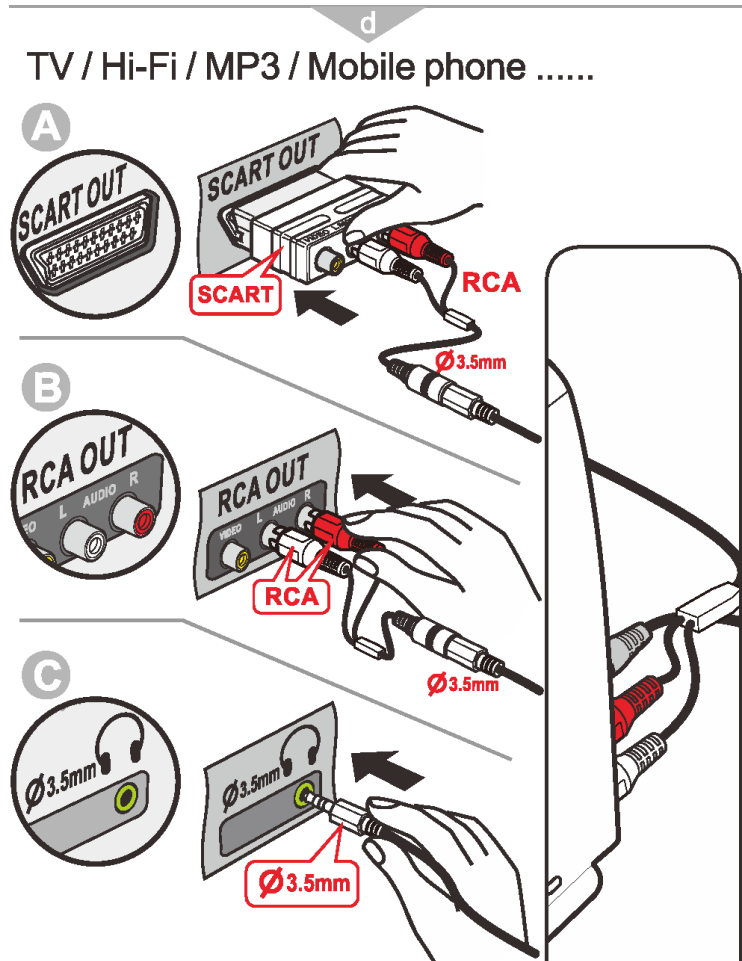
1. Insert the AC adaptor connector into the 'DC IN 5V' socket found on the back of the Charging Base.



2. Insert the RCA plugs of the male lead into the back of the charging base as per the colour coding i.e. red lead into red socket, white lead into white socket.

3. Insert the other end of this lead (the male jack) into the female jack.

INSTALLATION



A SCART Users

Insert the other side of the female 3.5mm jack to RCA Adaptor into your SCART connector.

5. Insert the SCART connector into your TV.

INSTALLATION

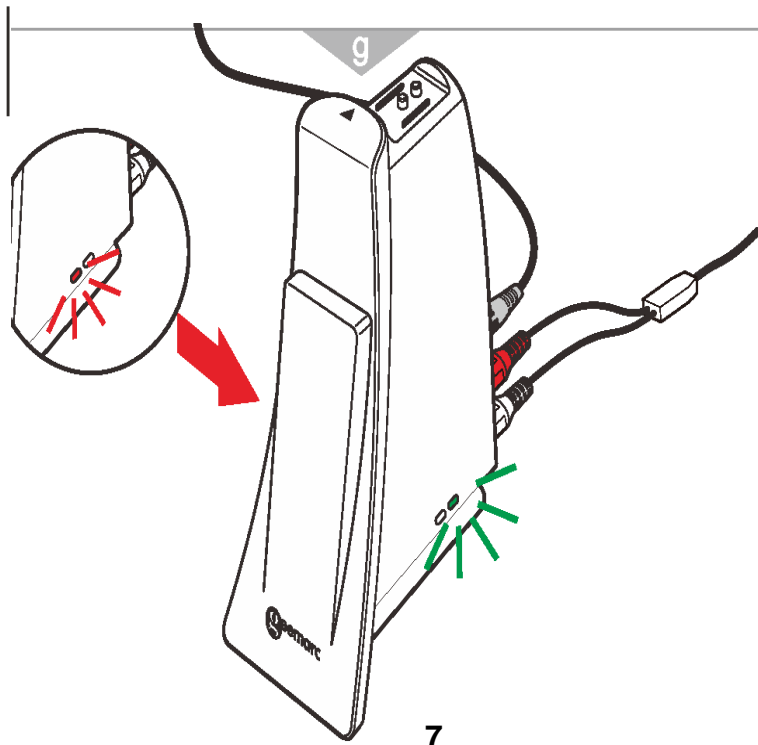
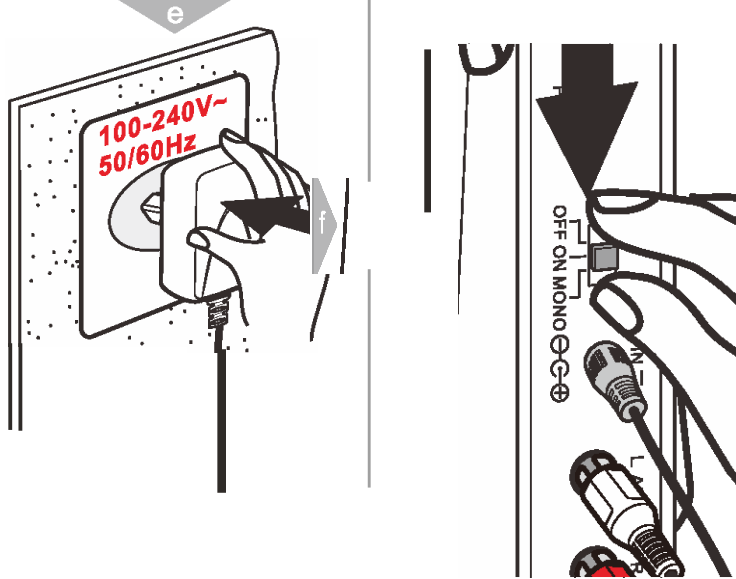
B RCA Users

Insert the RCA Adaptors into your TV RCA sockets as per the colour coding i.e. red lead into red socket, white lead into white socket.

C Neither SCART nor RCA Users

Insert one end of the 3.5 mm jack cable into the base of the headphones. Insert the other end of the 3.5mm jack cable into the 3.5mm jack Headphone jack found at the back of the TV. See page 18.

INSTALLATION



7

INSTALLATION

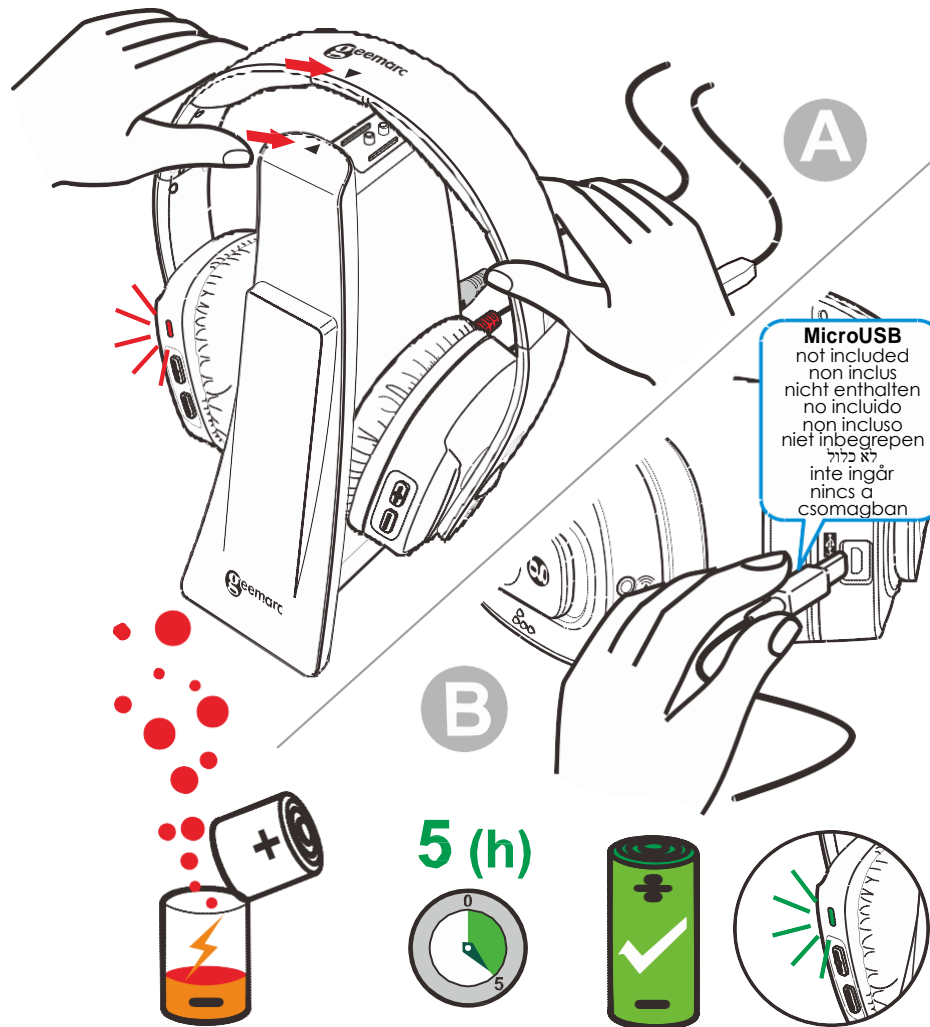
e) Plug the AC adaptor into your home power socket.

f) Switch the Charging Base to On.

g) A red light will initially be displayed on the right hand side of the base. After about 5 seconds the red light should go off and the green light will be displayed. The green light indicates that the unit is ON and is in standby mode.

8

INSTALLATION

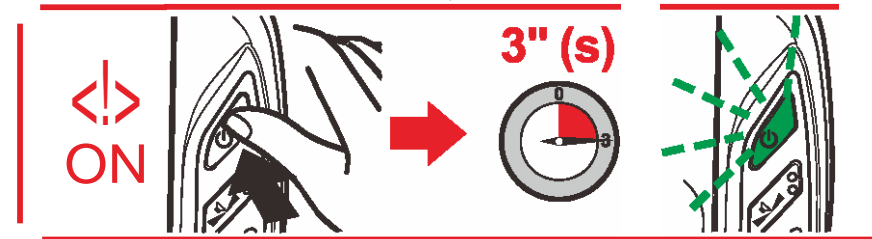


Place the headphones onto the Charging Station. A red light will show on the headphones. The red light indicates the headphone's batteries are charging. Charging takes 5 hours. After full charge the red light changes to green.

There is a Micro USB port located at the bottom of one of the earpieces. This allows charging to take place via other means. Please note the Micro USB port is not included.

USING THE CL7400

Turning the CL7400 On



After full charge the headphones can be used. Take the headphones from the base.

Press and hold the Power button on the headphones for 3 seconds. The Power Button should light up a green colour. The CL7400 is ready for use.

Place the headphones over your head and ensure the TV is switched on. Your CL7400 is now set up for the recommended levels. For further personalisation see the Settings Chapter.

Note: There is no need for pairing procedure. The pairing stage is done at the manufacturing stage.

SETTINGS

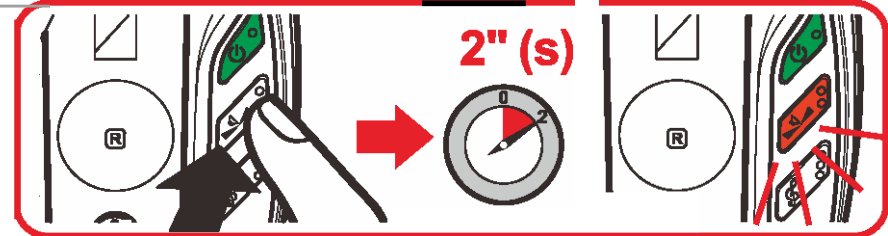
Volume Setting



Press '+' button on the headset to increase volume and '-' button to decrease volume. Holding the '+' button or '-' button will increase the volume or decrease the volume continuously. The Headset will beep when volume reaches midway volume..

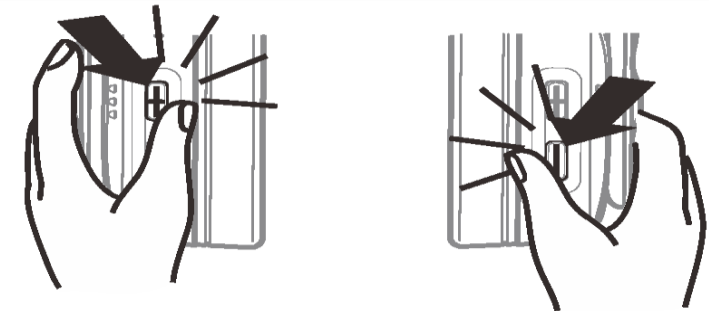
SETTINGS

Balance Setting



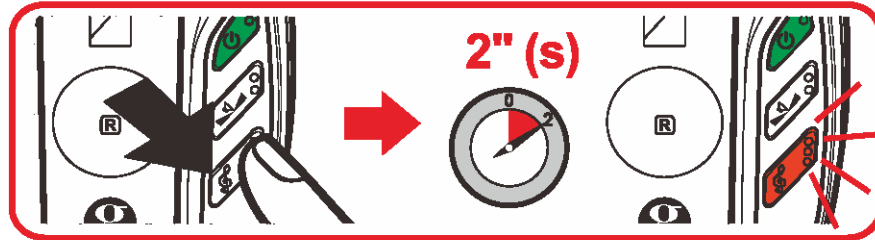
The balance can be controlled by pressing the balance button on the headphones. Press and hold this for 2 seconds, the button will light up red. At this point pushing headset '+' button will alter the audio to the left earphone. Pushing the '-' button will alter the audio to the right earphone. At minimum, maximum or middle point a beep will be heard. Balance setting mode will switch off automatically after 5 seconds.

Max L • ... (()) • ... **R Max**

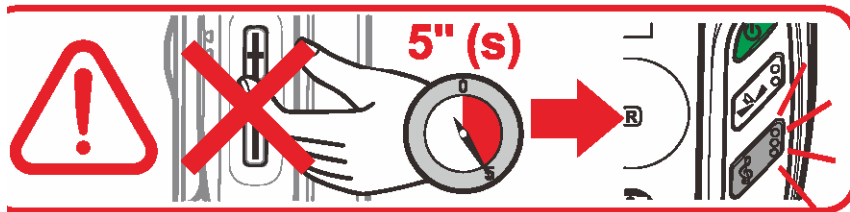


SETTINGS

Tone Setting



The Tone can be controlled by pressing the tone button on the headphones. Press and hold this for 2 seconds. At this point, pushing headset '+' button will increase the high tones. Pushing the '-' button will increase the low tones. At minimum, maximum or middle point a beep will be heard. Tone setting mode will switch off automatically after 5 seconds.



10

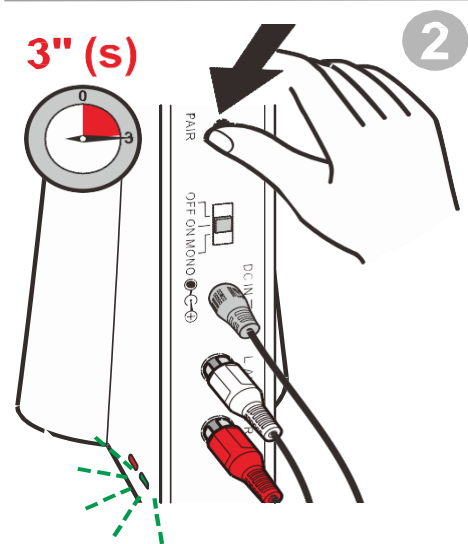
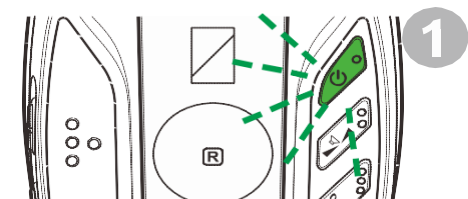
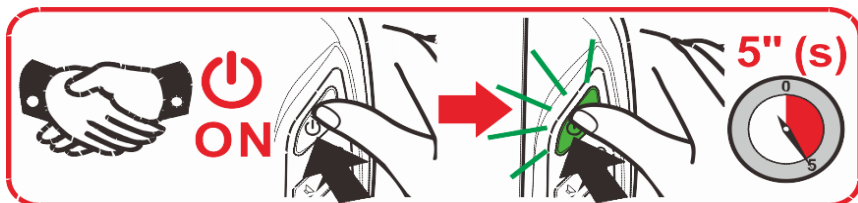
SETTINGS

Stereo/Mono Setting

Stereo or Mono mode can be controlled by moving S/M switch to the desired side. This switch is found on the underside of the charging base (using a needle or pencil is helpful).

Moving the switch to "S" side means the CL7200 will work in Stereo mode. Moving the switch to "M" side means the CL7200 will work in Mono mode

PAIRING



Your Headset was paired with the Base at the factory. When you switch on the Headset, the Headset will automatically recognise the Base; there is nothing for you to do in order to pair the two devices together.

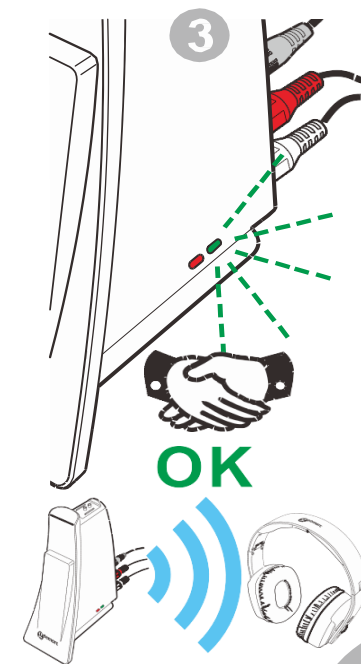
If for any reason the Headset and Base are no longer paired, there is a very simple procedure to follow in order to pair the two devices.

PAIRING

1) Switch on the Headset by pressing and holding the On button. The button should glow Green

2) Press and Hold the Pairing Button found on the Base (a pencil with a sharp point might help with this operation). Hold for 3 seconds.

3) The Headset and Base will be paired as shown by the Green light on the Base.



ECO MODE

The CL7400 runs in Eco Mode and this means there is 90% less emissions produced.

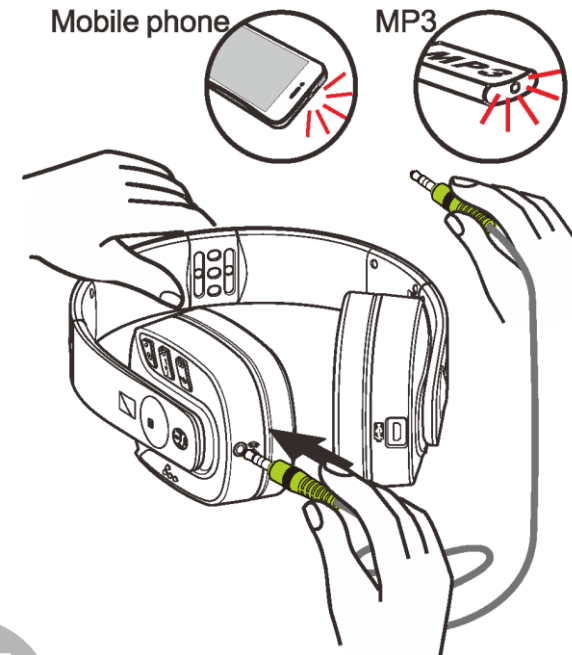
If the TV, Hi Fi or MP3 sound is reduced or muted for 4 minutes, the headphones will go into sleep mode.

To wake up the headphones, increase the volume on the TV, Hi Fi or MP3 player.

If no sound is transmitted between the base and the headphones for 10 minutes or you place the headphones back on the base, the headphones will switch off. To turn them back on again either lift the headphones off the base or switch the Press On button.

WIRED MODE

CL7400 with HiFi or MP3



15

Insert one side of cable 3.5mm jack into 'Audio' socket found on the bottom of the Headset. Insert the other side of the 3.5mm jack into audio out socket of your HI-FI, Mobile Phone, TV or MP3 player

TROUBLESHOOTING

No Sound

Ensure that the mains adapter is pushed fully into the power outlet and that its cable is properly connected to the DC IN 5V connector on the base.

Ensure that the headphones On/Off switch is switched to the On Position and the button is lit Green.

The headphones battery charge level may be low. Replace the headset back on its cradle to recharge the batteries until the green light is illuminated on the left hand headset.

Ensure that your DVD, TV set, Hi-Fi system or audio component is switched on and set to a channel that broadcasts an audio signal.

Use the headphones volume control to increase the sound level (only when use as a wireless headphone).

The audio signal input level is too low. Increase the volume from the audio source of Hi-Fi, CD, or TV, etc.

The connected audio/video equipment may not be in playback mode. Start playback on by the equipment.

The headphones output level is set too low. Adjust the volume to a suitable level.

TROUBLESHOOTING

Distortion

Restart the Pairing process.

The headphone's batteries charge level may be too low. Recharge the batteries.

Ensure that the volume setting is correct.

The headphones may be too far away from the base. Move closer to it.

The audio signal input level is too strong. decrease the volume from the audio source of Hi-Fi, CD, or TV, etc.

Note:

In the event of the television not having the standard red and white audio output RCA, or the audio jack, then it is most likely the TV will have an optical audio output. By purchasing a Geemarc optical converter (our reference CL7XX_OPT) this will allow the CL7400 to connect to the TV's optical output successfully.

SAFETY INFORMATION

General

To make the best use of this product and to use it safely, please read these instructions thoroughly before use and keep them safe for future reference.

This product can be very loud. Take care to prevent others from using this product if they do not have the same level of hearing loss. Excessive sound level from earphones and headphones can cause hearing loss.

Do not insert unattached plug heads in to mains power sockets. Plug heads must be fitted to the power adaptor.

The unit is designed to operate from a 100-240VAC-50/60Hz supply. (Classified as 'hazardous voltage' according to EN60950 standard).

The unit does not incorporate an integral power on/off switch. To disconnect the power, either switch off supply at the mains power socket or unplug the AC adaptor. When installing the unit, ensure that the mains power socket is readily accessible.

Do not open the unit. Contact the helpline for all repairs.

Do not remove the earpads as they are very difficult to replace.

Please note: The unit may be subject to interference from appliances that generate strong electrical or magnetic fields e.g. microwaves, mobile phones, lighting transformers etc.

Cleaning

Clean the CL7400 with a soft cloth. Never use polishes or cleaning agents - they could damage the finish or the electrics inside.

SAFETY INFORMATION

Environmental

Do not expose to direct sunlight or other heat sources.

Always ensure there is a free flow of air over the surfaces of the CL7400.

Do not place any part of your product in water and do not use it in damp or humid conditions e.g. bathrooms.

Do not expose your product to fire or other hazardous conditions.

Battery Warnings

Do not attempt to dismantle

Do not dispose of in fire

Do not swallow

Keep away from children

Batteries are to be inserted with the correct polarity

Do not short-circuit the supply terminals

Exhausted batteries are to be removed from the product

Do NOT use another type of battery or non-rechargeable batteries to replace the rechargeable batteries.

When the headphones are not in use or the batteries are charging, switch **OFF** the headphones to avoid damaging the batteries.

The batteries must be fully charged when use for the first time. An initial 5 hours charge is required

Dispose of used batteries according to the instructions.

GENERAL INFORMATION

Features

- 2.4GHz FHSS digital technology with equalizer features for tone and balance adjustments.
- High quality stereo sound that is virtually interference-free
- Transmission is not restricted solely to line of sight
- Digital Pairing System on Headphone & Transmitter
- Electronic volume control on headphones
- Built-in Pin-charger on transmitter
- Auto shut-off on headphone
- Auto On/Off RF function on transmitter
- 3.5mm Line in feature for wired headphone application
- Operating distance up to 50 meters
- Braille identification on Volume key
- 8 hours continuous use

Technical Specification

Transmission mode: 2.4GHz digital FHSS stereo

Carrier frequency: 2.4GHz

Operating voltage: Transmitter 6 V 600 mA
: Receiver 3.7V 1000mA
(built-in Lithium rechargeable battery)

Frequency response : 20 Hz – 20 KHz (electrical)

Distortion: 0.5 %

Signal-to-noise ratio: 75 dB

Channel separation: 60 dB

Range: 50 meters (open area)

GUARANTEE

From the moment your Geemarc product is purchased, Geemarc guarantee it for the period of one year. During this time, all repairs or replacements (at our discretion) are free of charge. Should you experience a problem then contact our help line or visit our website at www.geemarc.com. The guarantee does not cover accidents, negligence or breakages to any parts. The product must not be tampered with or taken apart by anyone who is not an authorised Geemarc representative. The Geemarc guarantee in no way limits your legal rights.

IMPORTANT: YOUR RECEIPT IS PART OF YOUR GUARANTEE AND MUST BE RETAINED AND PRODUCED IN THE EVENT OF A WARRANTY CLAIM.

Please note: The guarantee applies to the United Kingdom only

DECLARATION: Geemarc Telecom SA hereby declares that this product is in compliance with the essential requirements and other relevant provisions of the Radio and Telecommunications Terminal Equipment Directive 1999/5/EEC and in particular article 3 section 1a, 1b and section 3.



RECYCLING DIRECTIVES

The WEEE (Waste Electrical and Electronic Equipment) has been put in place for the products at the end of their useful life are recycled in the best way.

When this product is finished with, please do not put it in your domestic waste bin.

Please use one of the following disposal options:

- Remove the batteries and deposit them in an appropriate WEEE skip.

Deposit the product in an appropriate WEEE skip.

- Or, hand the old product to the retailer. If you purchase a new one, they should accept it.

Thus if you respect these instructions you ensure human health and environmental protection.



For product support and help visit our website at www.geemarc.com

Telephone 01707 384438

Or fax 01707 372529

UGCL7400_UK ED.01